

## SPECIFICATIONS

## ISA Connector

### Mechanical

**Contact Retention Force:** 1.80kgf min.  
**Mating Force:** 340gf max. per Contact Pair  
**Unmating Force:** 28gf min. per Contact Pair  
**Durability:** 500 Cycles

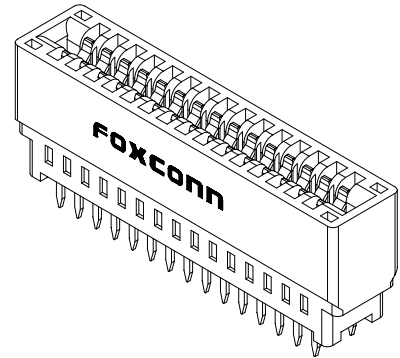
### Electrical

**Current Rating:** 3A max.  
**Current Voltage:** 250V AC  
**Contact Resistance:** 15mΩ max. initial  
**Dielectric Withstanding Voltage:** 1000V  
**Insulation Resistance:** 5000MΩ min.

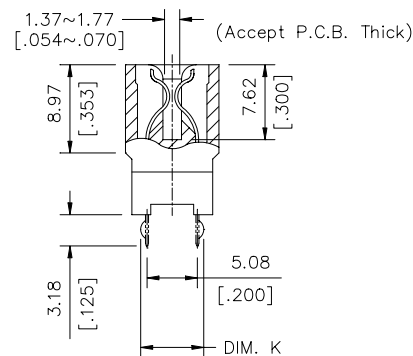
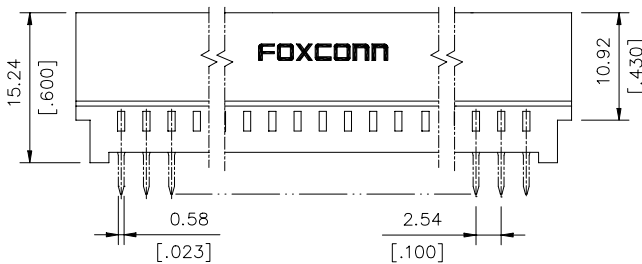
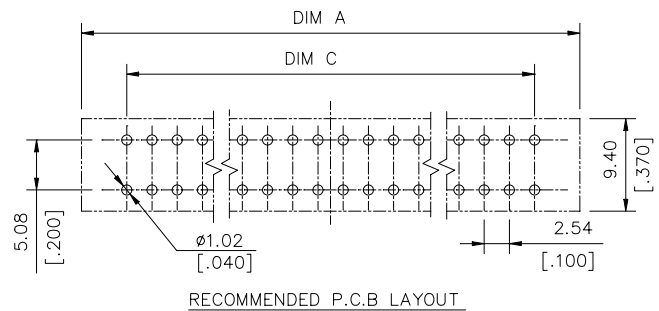
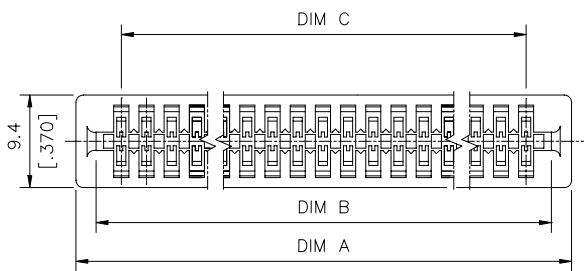
### Physical

**Housing:** Thermoplastic, UL 94V-0 rated, in Black Color  
**Contact:** Copper alloy  
**Plating:** See "ORDERING INFORMATION"  
**Operating Temperature:** -55°C to +85°C

**ES Series**  
**Vertical Type**  
**2.54mm [.100"] Pitch**  
**30 Pos.**



## DRAWING



## ORDERING INFORMATION

PRODUCT NO.: ES 0 15 0 \*

Series Prefix

2.54 [.100] Pitch  
 Edge Card Conn.

Termination Type

0=Straight

No. of Pos.

15=30 Pos.

Contact Area Plating

1=Gold Flash  
 2=20u" Gold  
 3=30u" Gold  
 6=10u" Gold  
 7=15u" Gold

Tail Length Type

0=3.18 [.125]

ES0150*	44.71 [1.760]	40.63 [1.600]	35.56 [1.400]	Without Kink
P/N	DIM A	DIM B	DIM C	Kink Pos.